



Quality fitted kitchen ■ Stainless steel oven ■ Stainless steel hob and hood
 Carpets ■ Small patio area ■ Audio entry system ■ Allocated parking
 12 year NHBC warranty

BROMLEY COMMON



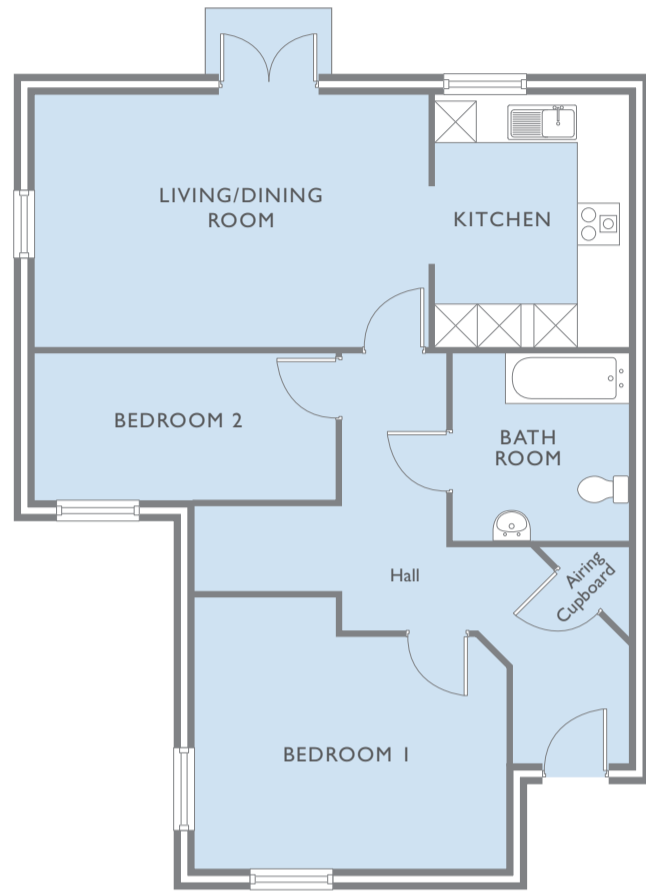
Two bedroom apartment

Plot 40 GROUND FLOOR (78m²)

Room dimensions* (approximate)

Living/Dining room	19' 0" x 11' 10"	-	5.80 m x 3.65 m
Kitchen	9' 2" x 11' 10"	-	2.80 m x 3.65 m
Bedroom 1	13' 8" x 13' 2"	-	4.22 m x 4.00 m
Bedroom 2	13' 2" x 7' 0"	-	4.00 m x 2.16 m
Bathroom	8' 4" x 8' 9"	-	2.55 m x 2.74 m

*All measurements are taken from the widest points of each room.



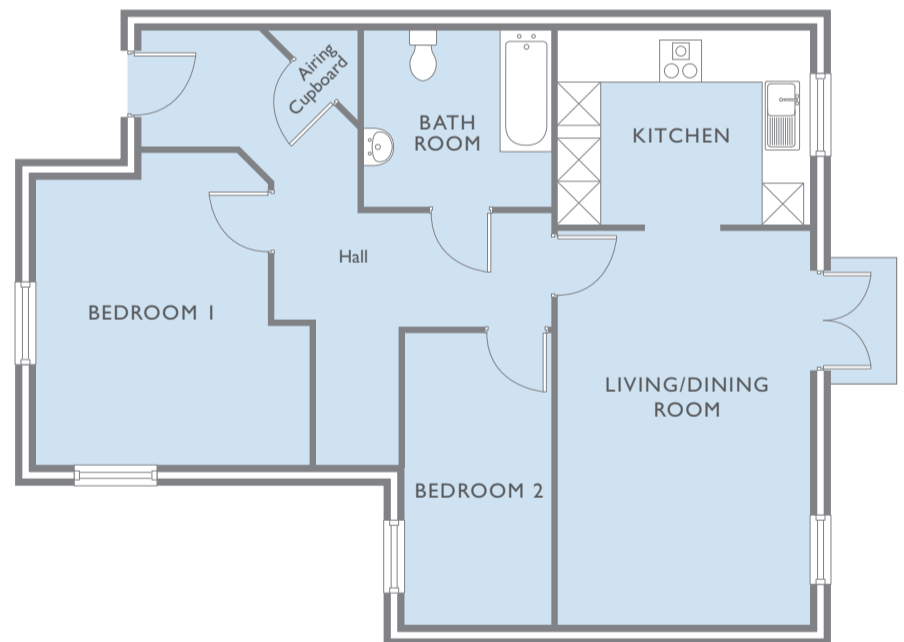
Two bedroom apartment

Plot 41 GROUND FLOOR (77.4m²)

Room dimensions* (approximate)

Living/Dining room	11' 10" x 18' 9"	-	3.65 m x 5.76 m
Kitchen	11' 10" x 9' 2"	-	3.65 m x 2.80 m
Bedroom 1	13' 2" x 13' 2"	-	4.00 m x 4.00 m
Bedroom 2	7' 0" x 13' 2"	-	2.16 m x 4.00 m
Bathroom	8' 9" x 8' 3"	-	2.74 m x 2.55 m

*All measurements are taken from the widest points of each room.



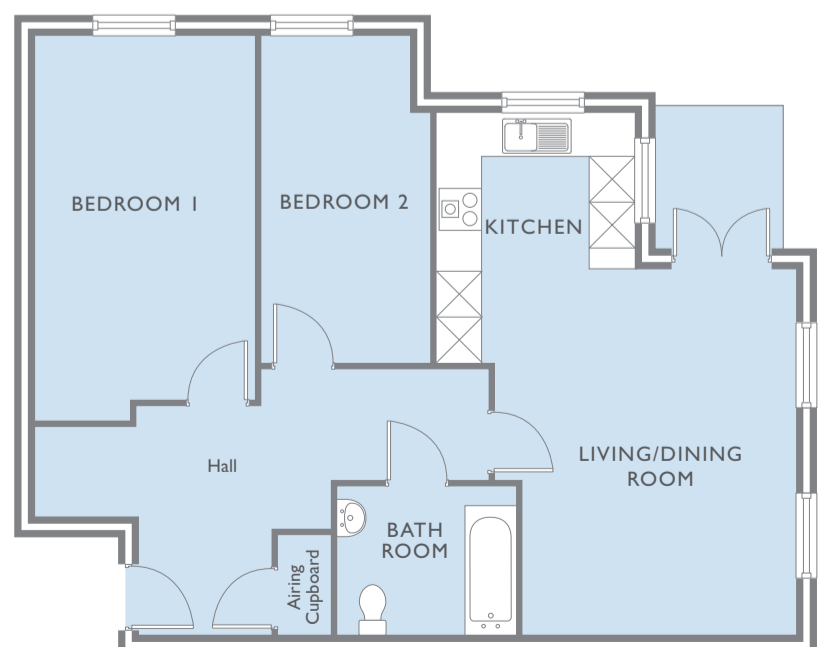
Two bedroom apartment

Plot 44 GROUND FLOOR (78.7m²)

Room dimensions* (approximate)

Living/Dining room	14' 5" x 17' 8"	-	4.42 m x 5.45 m
Kitchen	9' 2" x 11' 0"	-	2.81 m x 3.37 m
Bedroom 1	10' 2" x 17' 9"	-	3.11 m x 5.46 m
Bedroom 2	8' 5" x 14' 7"	-	2.60 m x 4.49 m
Bathroom	9' 4" x 7' 7"	-	2.87 m x 2.36 m

*All measurements are taken from the widest points of each room.



In accordance with the Property Misdescriptions Act 1991 these details have been prepared with due care. However, the information contained here is intended as a preliminary guide only and all dimensions are approximate.

Affinity Sutton reserves the right to amend tenure, site or home layouts, specifications or materials.